

POWDER COATINGS

# LIVING COLOR



# CHEMREZ

TECHNOLOGIES



Color is life. It can ignite passion, energize a moment, evoke joy, infuse a sense of refreshment, create an atmosphere of serenity. Whether for practical or aesthetic purposes, color surrounds our everyday life.

Color is what Chemrez Technologies, Inc. (CTI) is all about. Since 1985, it has been the leading powder coating manufacturer in the Philippines, providing state-of-the-art, high-quality color solutions to industrial and commercial manufacturers in the country.

CTI is under license from Jotun, a leading supplier of paints and powder coating. This affiliation gives CTI unique access to high-quality raw materials and the latest scientific equipment.

As part of its commitment to delivering the best quality products and most efficient services to its clients, CTI is IMS-certified, and consistently complies with the highest international quality standards. As a result, it is preferred and specified by multinationals, and takes pride in its long-standing relationships with top consumer and chemical corporations.

Chemrez Technologies, Inc., invites you to ignite, energize, infuse, and create. Together, let's paint the world in living color.



# PRIMARY PRODUCTS

The Corro-Coat line is made with high-quality materials, and meet demanding global standards. No matter what the powder coating requirement, Corro-Coat has the product to meet your specific need.

## Epoxy

Powder coatings for product which demand both decorative and protective properties. Applications are indoor product that requires high resistance to solvents and chemicals.

## Epoxy- Polyester

Powder coatings for indoor products that satisfy the demands of decorative finish combined with functional properties.

## Polyester

Powder coatings for commercial outdoor products that require protective qualities with good weathering resistance.

## Polyester Prime

Powder coatings for high quality outdoor products that satisfy the requirement on very good weathering and UV resistance. Quality meets AAMA 2603 specification

## Polyester Extra Prime

Powder coatings provide superior durability in harsh weather conditions, excellent UV and corrosion resistance. Quality meets AAMA 2604 specification.

PRIMARY PRODUCTS

DOMESTIC WHITEWARE

FURNITURE AND FIXTURES

INDUSTRIAL SPECIALTIES

ELECTRONICS

ARCHITECTURE AND CONSTRUCTION

**CHEMREZ**  
TECHNOLOGIES

FOR PRODUCT INQUIRIES

Telephone : (632) 635-0680

Fax : (632) 635 0703

Email: [marketing@chemreztechnologies.com](mailto:marketing@chemreztechnologies.com)  
[marketing@corrocoat.com.ph](mailto:marketing@corrocoat.com.ph)

Address: 65 Industria Street  
Bagumbayan, Quezon City  
1110 Metro Manila, Philippines

# PRIMARY PRODUCTS

The Corro-Coat line is made with high-quality materials, and meet demanding global standards. No matter what the powder coating requirement, Corro-Coat has the product to meet your specific need.

## Epoxy

Powder coatings for product which demand both decorative and protective properties. Applications are indoor product that requires high resistance to solvents and chemicals.

## Epoxy- Polyester

Powder coatings for indoor products that satisfy the demands of decorative finish combined with functional properties.

## Polyester

Powder coatings for commercial outdoor products that require protective qualities with good weathering resistance.

## Polyester Prime

Powder coatings for high quality outdoor products that satisfy the requirement on very good weathering and UV resistance. Quality meets AAMA 2603 specification

## Polyester Extra Prime

Powder coatings provide superior durability in harsh weather conditions, excellent UV and corrosion resistance. Quality meets AAMA 2604 specification.





# AUXILIARY PRODUCTS

To complement its powder coating product lines, CTI has developed a series of high-quality support products that adhere to the same strict performance standards.

## Maxsolv Plus, Powder Coating Stripper

Maxsolv Plus efficiently strips powder coated surfaces by weakening the coating's adhesive grip, allowing it to easily separate from the substrate.

## Corrosolv (De-ruster, Metal Conditioner)

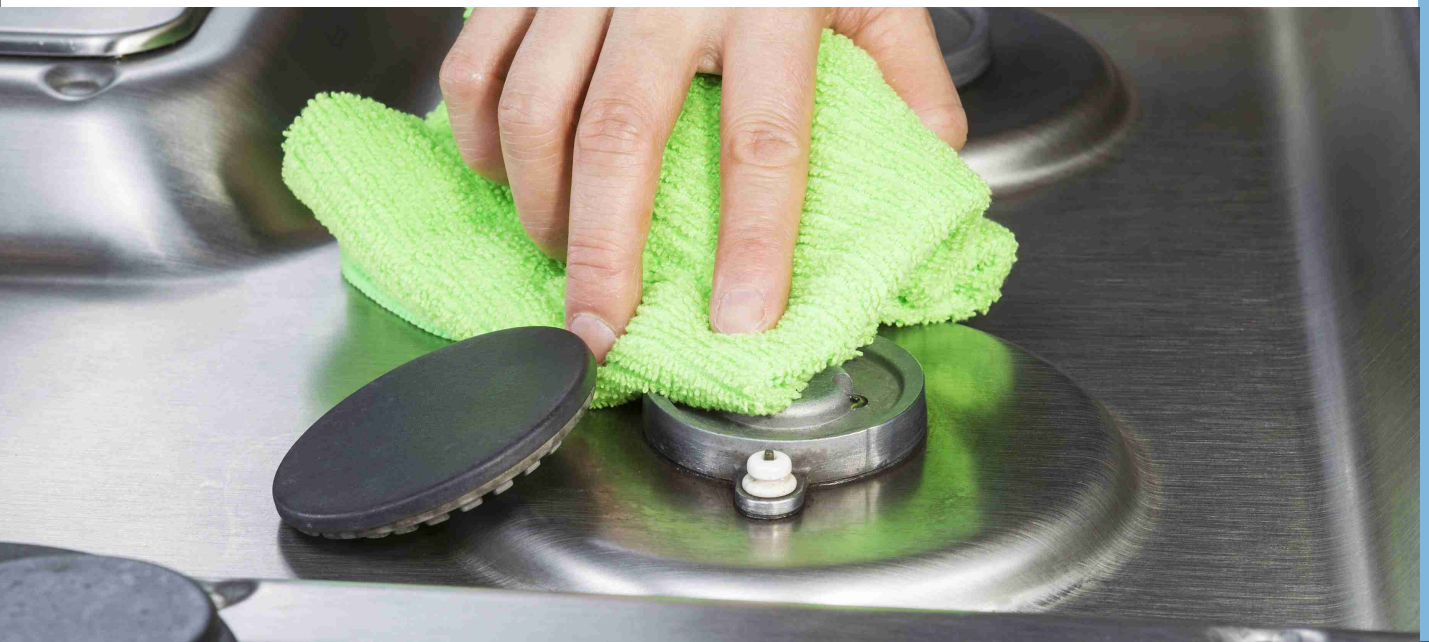
Corrosolv is a phosphoric acid based cleaner that swiftly and effectively removes soil and rust from metal, leaving a clean, conditioned surface, in one step.

## Corro Kleen Surface Cleaner

Corro Kleen's special formulation removes dust and stubborn dirt from a variety of surfaces including metals and plastics, leaving nothing but a clean shine

## Corro Kleen Industrial Detergent

All-purpose alkaline detergent powder made especially for manual cleaning.



# DOMESTIC WHITEWARE

COLOR IS CLEAN.

At CTI, we understand the everyday demands of family living.

We know that it's important that certain areas of the home not only stand up to the wear and tear of normal life, but also be able to help protect from both chemical and microbial hazards.

## CORRO-COAT APPLIANCE GRADE COATINGS

### FEATURES:

- ▶ Greater coverage area per application
- ▶ Good UV protection
- ▶ Scratch-resistant
- ▶ Resistant to various household chemicals
- ▶ Easy to clean
- ▶ Uniform finish



# DOMESTIC WHITEWARE



## CORRO-COAT APPLIANCE GRADE COATINGS

CTI makes high-quality powder coating products designed to meet and exceed the standards of domestic use, where daily hygiene and protection are prioritized.

Created to withstand the varied conditions present in the home, our powder coatings both protect and beautify home appliances such as refrigerators, freezers, electric fans and air conditioners.

Our appliance-grade coatings can also be custom-engineered to provide added benefits over and above our regular formulation.

Among these are:

## ANTIMICROBIAL AND ANTI-MOLD PROTECTION

For the prevention of the growth of microbes and mold. Ideal for hospital beds, clean rooms, children's play pens, refrigerators, and more.

## ROHS COMPLIANCE

Made from raw materials that are free from Lead (Pb), Mercury (Hg), Cadmium (Cd), Hexavalent Chromium (CrVI), Polybrominated Biphenyls (PBB) and Polybrominated Diphenyl Ethers (PBDE), each substance used remains within acceptable ppm standards, our formulation passing both in-house testing and third-party certifications.

## SANDPAPER-INSPIRED FINISHES

Besides brilliant color and smooth finishes, coatings are also available in unique and stylish sandpaper textures, making them both easy to maintain and easy to match to both dark and light appliance units.

# FURNITURE AND FIXTURES

COLOR IS BEAUTIFUL.

True beauty endures.

That's why CTI has created a series of fine finishes that not only enhance the natural lines and curves of furniture design, but are specially formulated to add durability and protection as well, so beautiful pieces remain beautiful, year after year.

## CORRO-COAT FURNITURE COATINGS

### FEATURES:

- ▶ Greater coverage area per application
- ▶ Scratch-resistant
- ▶ Easy to clean
- ▶ Uniform finish





# FURNITURE AND FIXTURES



## CORRO-COAT FURNITURE COATINGS

We understand that beautiful furniture is not just made to look good, but to actually keep looking beautiful despite the normal wear and tear of everyday use.

That's why high-quality CTI powder coatings are made to be scratch-resistant as well as easy to clean, with a smooth, uniform, high-quality luster.

Our **Comfort Series** is durable, available in a wide variety of colors, ideal for indoor furnishings such as cabinetry, tables and chairs.



Our **Structural Series** provides additional protection against UV and corrosion and other harsh environmental conditions. It's especially designed for outdoor furniture, electrical panel boards and streetlamp posts.



Besides the spectrum of colors we provide, we can also create custom-finishes for either indoor or outdoor applications:

## ANTIQUE AND HAMMERTONE FINISHES

Finishes that give the unique, premium appearance of hammered iron. Best for doors and decorative items.

## METALLIC AND PEARLESCENT FINISHES

Formulated with metallic pigments that create solid, sparkling colors.

This line also includes our Special Silver Finish, developed specifically for rugged outdoor use, as in mag wheels, doors and window frames.



# INDUSTRIAL SPECIALTIES

COLOR IS HARDWORKING.

Color works, too.

It differentiates, classifies, regulates, protects.

Nowhere is this more apparent than in a line of high-performance finishes made to withstand the rigorous demands of building equipment, machinery, and the automotive industry.

CTI knows that to keep industries running smoothly, everything needs to work together, efficiently and effectively. And that includes the coating on every tool and mechanism.

## CORRO-COAT INDUSTRIAL COATINGS

### FEATURES:

- ▶ Greater coverage area per application
- ▶ Scratch-resistant
- ▶ Good UV protection
- ▶ Uniform finish





# INDUSTRIAL SPECIALTIES

## CORRO-COAT INDUSTRIAL COATINGS

CTI engineers powder coatings specifically to address the unique requirements of machinery and enhance performance: scratch-resistance to withstand the rigors of precise, continuous activity; even, smooth finishes that don't interfere with movement; UV protection. The mileage of its coverage makes it economically efficient as well.

CTI formulates high-quality Industrial Powder Coatings for Machinery and Tools as well as specialty Automotive applications, which may be customized according to specific customer requirements:

## MACHINERY AND TOOLS

Coatings made resistant to harsh environmental conditions, with shorter curing times.

## AUTOMOTIVE AND MOTORCYCLE

Customized formulations specially developed to comply with specific end-customer requirements in application and protective qualities.



# ELECTRONICS

COLOR IS SAFE.

Color provides protection as well.

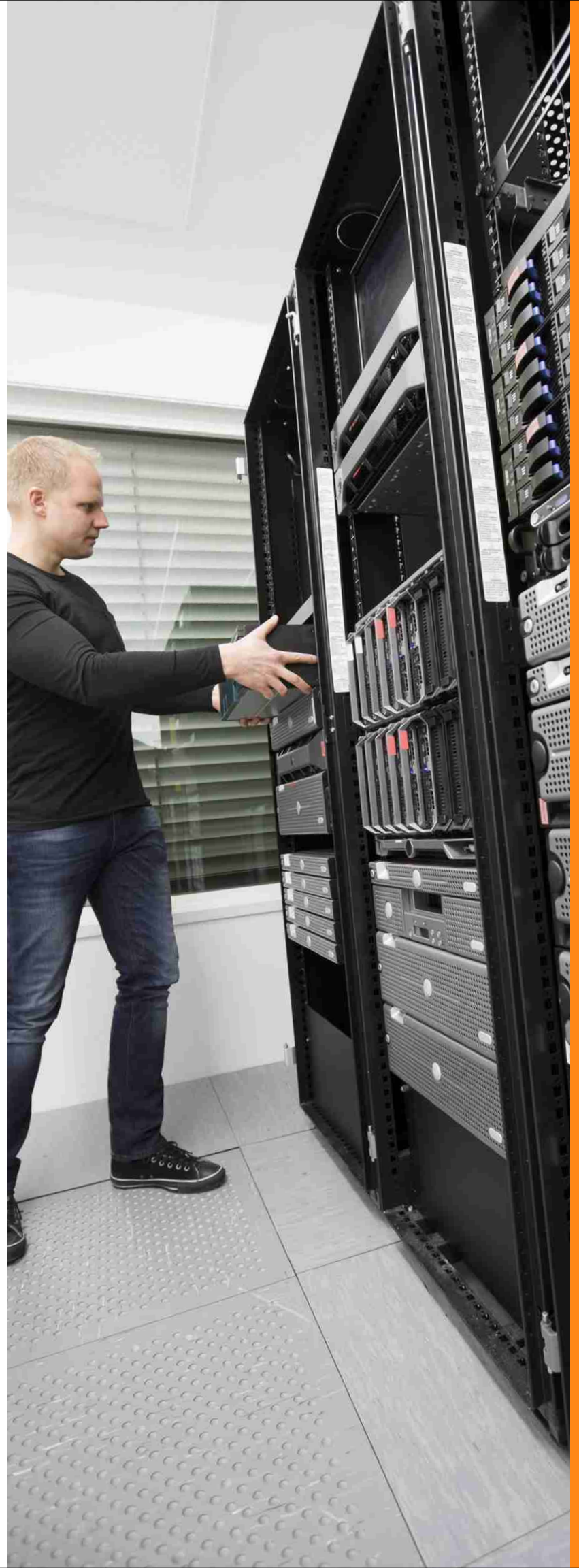
With the world's ever-growing dependency on electronics, CTI developed high-performance powder coatings made to very specific requirements.

For electrical applications, CTI has developed coatings that cure at low temperatures, shield against corrosion and complement the specific needs of power systems.

## CORRO-COAT ELECTRONIC COATINGS

### FEATURES:

- ▶ Uniform, smooth finish
- ▶ Good UV protection
- ▶ Corrosion protection
- ▶ Very good mechanical properties
- ▶ Scratch-resistant





# ARCHITECTURE AND CONSTRUCTION

COLOR IS VERSATILE.

As architectural design moves forward, and construction requirements become more technical, CTI continues to innovate high-performing products that meet the requirements of this ever-evolving industry.

The cities of the future, in full, glorious color: challenge accepted.

## CORRO-COAT ELECTRONIC COATINGS

### FEATURES:

- ▶ Greater coverage area per application
- ▶ Uniform finish
- ▶ Good UV protection
- ▶ Very good mechanical properties
- ▶ Good UV and corrosion protection
- ▶ Very good mechanical properties



# ARCHITECTURAL AND CONSTRUCTION

## D&L ARCHITECTURAL COATING PRODUCTS

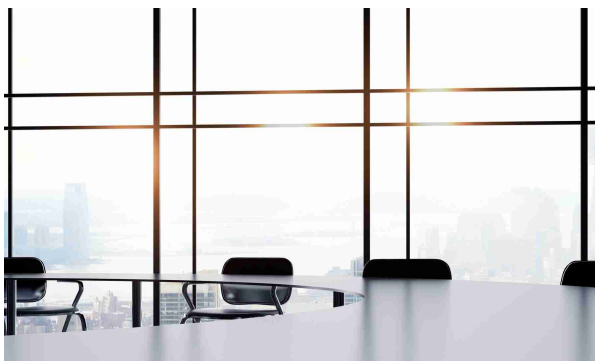
With the increasing sophistication and globalization of modern architecture and construction, coatings that enhance aesthetics as well as protection are of primary importance.

CTI creates powder coatings adapted to the diverse requirements modern design demands. We've developed a number of products suitable for various surface applications

## ALUMINUM

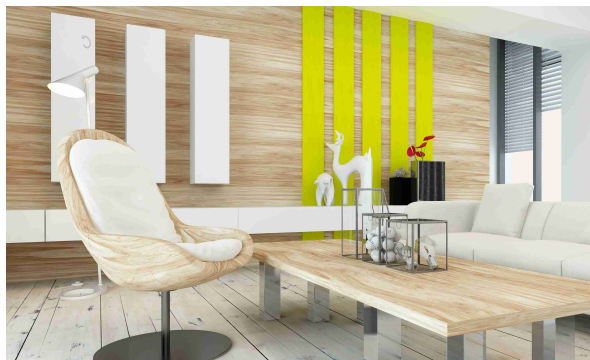
CTI has developed a series of polyester-based formulas with increasing degrees of resistance for aluminum applications:

- ▶ **Polyester** - cost-efficient, commercial grade coatings with corrosion protection, making it ideal for aluminum applications
- ▶ **Polyester Prime** - AAMA 2603-compliant, superior quality finishes that provide excellent weathering resistance.
- ▶ **Polyester Prime Extra**-AAMA 2604-compliant performance, formulated with super-durable materials for extreme resistance to harsh weather conditions



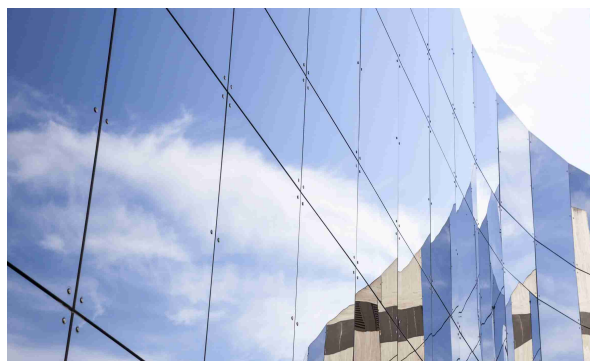
## WOOD

An ideal finish base coating used in sublimation processes, resulting in clear and sharp wood finish designs every time. CTI wood base coatings are scratch-resistant, easy to clean, and offer effective UV protection. The coating is not only chemical and weather-resistant, but also ensures excellent ink penetration and film adhesion.



## GLASS

CTI Glass Coatings specifically designed for superior applications on glass surfaces. With UV protection, and effective resistance to chemicals, fading and discoloration, the coatings adhere easily to glass, creating a smooth, easy to clean and scratch-resistant surface. Available in a variety of colors and finishes: solid and metallic colors, clear coat, frosted and marble.





**CHEMREZ**  
TECHNOLOGIES

**D&L**

## COLORING THE FUTURE

One color defines everything we produce at Chemrez: green. We call it Green Chemistry, a promise to drastically reduce or even eliminate the use of hazardous substances and minimize the generation of it.

The benefits are undeniable: better and more efficient use of resources, less pollution, a reduction in waste, less wasted energy, safer products.

At Chemrez, we commit ourselves to the vision of a living, breathing Earth of tomorrow, and the responsibility we all have towards making that reality.



GREEN CHEMISTRY